



# Impact Reconciliation Procedure

McPhee Creek Iron Ore Project

12/07/2024

124-EN-PLN-0010 v5

# Impact Reconciliation Procedure

McPhee Creek Iron Ore Project



## Authorisation

Version	Reason for Issue	Prepared	Checked	Authorised	Date
1	To support Environmental Review Document submission	J. Morgan	S. Shute	H. Nielssen	26/11/2021
2	Updated to incorporate EPA feedback	J. Morgan	S. Blake	S. Shute	22/04/2022
3	Updated to incorporate expected EPBC offset requirements	M. Bird	S. Shute	S. Shute	09/12/2022
4	Re-issue to DWER for approval under Ministerial Statement 1224	M. Bird	M. Bird	B. Dilley	26/06/2024
5	Updated to address DWER comments and for approval under Ministerial Statement 1224	M. Bird	M. Bird	D. Morley	12/07/2024



# Impact Reconciliation Procedure

McPhee Creek Iron Ore Project

## Table of Contents

<b>1</b>	<b>The Proposal and Condition Requirements.....</b>	<b>1</b>
1.1	The Proposal .....	1
1.2	Ministerial Statement Condition Requirements .....	1
1.3	EPBC Condition Requirements .....	2
<b>2</b>	<b>Procedure.....</b>	<b>5</b>
2.1	Identification of Biodiversity Values Requiring Offsets .....	5
2.2	Methods to Determine Impacts .....	10
2.2.1	Ground Disturbance Permits .....	10
2.2.2	Determining the Extent of Clearing .....	10
<b>3</b>	<b>Reporting.....</b>	<b>12</b>
3.1	Frequency and Timing.....	12
3.2	Impacts and Reconciliation .....	13
<b>4</b>	<b>References .....</b>	<b>15</b>

### List of Tables

Table 2-1: Environmental Values to be Offset.....	6
Table 2-2: Definitions of clearing terms .....	11
Table 3-1: Impact Reconciliation Reporting Periods.....	12
Table A-1: Estimate of Contributions to the PEOF under the EPBC Act .....	16

### List of Figures

Figure 1-1: Regional Location .....	3
Figure 1-2: Development Envelopment and Conceptual Footprint .....	4
Figure 2-1: Habitat types within the Development Envelope .....	7
Figure 2-2: Vegetation condition within the Development Envelope .....	8
Figure 2-3: Environmental Values Requiring Offset.....	9



## Impact Reconciliation Procedure

McPhee Creek Iron Ore Project

## Glossary

(the) Proposal	(the) McPhee Creek Project
(the) Proponent	Atlas Iron Pty Ltd

## Abbreviations

Atlas	Atlas Iron Pty Ltd
CPI	Consumer Price Index
DAWE	(former) Department of Agriculture, Water and Environment
DCCEEW	Department of Climate Change, Energy, the Environment and Water
DWER	Department of Water and Environment Regulation
EH&A	Environment, Heritage & Approvals
EP Act	Environmental Protection Act 1986
EPA	Environmental Protection Authority
EPBC Act	Environment Protection and Biodiversity Conservation Act 1999
GDP	Ground Disturbance Permit
GDV	Groundwater Dependent Vegetation
GIS	Geographic Information System
Ha	Hectare
IBRA	Interim Biogeographic Regionalisation for Australia
IRP	Impact Reconciliation Procedure
IRR	Impact Reconciliation Report
MNES	Matters of National Environmental Significance
Mtpa	Million tonnes per annum
PEOF	Pilbara Environmental Offset Fund



# 1 The Proposal and Condition Requirements

## 1.1 The Proposal

Atlas Iron Pty Ltd (Atlas, the Proponent) is seeking approval to develop the McPhee Creek Project (the Proposal), located approximately 30 km north of Nullagine townsite in the Pilbara region of Western Australia.

The Proposal includes the development of mine pits and associated infrastructure, including but not limited to crushing and screening facilities, waste landforms, run of mine pad, access roads, power infrastructure, administration, accommodation camp, stockpile and laydown areas, borrow pits, groundwater bores and transfer infrastructure, explosive magazine, fuel storage and landfill.

The Proposal has been assessed and approved under the Western Australian *Environmental Protection Act 1986* (EP Act; Assessment No. 2285) and is pending approval under the Commonwealth *Environment Protection and Biodiversity Conservation Act 1999* (EPBC Act; EPBC 2021/8897).

## 1.2 Ministerial Statement Condition Requirements

Table 2-1 outlines the condition requirements from Ministerial Statement 1224 (MS1224).

Reference	Condition
B7-1	The proponent must contribute funds to the Pilbara Environmental Offsets Fund calculated pursuant to condition B7-2, to achieve the objective of counterbalancing the significant residual impacts to:
	1) 'Good' to 'Excellent' condition native vegetation;
	2) Riparian vegetation (including groundwater dependent vegetation)
	3) Critical habitat for northern quoll ( <i>Dasyurus hallucatus</i> ), Pilbara olive python ( <i>Liasis olivaceus barroni</i> ), greater bilby ( <i>Macrotis lagotis</i> ), ghost bat ( <i>Macroderma gigas</i> ) and Pilbara leaf-nosed bat ( <i>Rhinonictis aurantia</i> ) and subject to any reduction approved by the CEO under condition B7-9; and
	4) Supporting habitat for northern quoll ( <i>Dasyurus hallucatus</i> ), Pilbara olive python ( <i>Liasis olivaceus barroni</i> ), ghost bat ( <i>Macroderma gigas</i> ) and Pilbara leaf-nosed bat ( <i>Rhinonictis aurantia</i> ) subject to any reduction approved by the CEO under condition B7-9.
B7-2	The proponent's contribution to the Pilbara Environmental Offsets Fund must be paid biennially, with the amount to be contributed calculated based on the clearing undertaken in each year of the biennial reporting period in accordance with the rates in condition B7-3. The first biennial reporting period must commence from ground disturbing activities of the environmental value(s) identified in condition B7-3.
B7-3	1) \$893 AUD (excluding GST) per hectare of 'Good' to 'Excellent' condition native vegetation cleared as a result of the proposal within the Chichester IBRA subregion;
	2) \$1,787 AUD (excluding GST) per hectare of riparian vegetation (including groundwater dependent vegetation) cleared as a result of the proposal within the Chichester IBRA subregion;

## Impact Reconciliation Procedure

### McPhee Creek Iron Ore Project



Reference	Condition
	<p>3) \$1,787 AUD (excluding GST) per hectare of the following values cleared as a result of the proposal:</p> <ul style="list-style-type: none"> <li>a. northern quoll (<i>Dasyurus hallucatus</i>) critical habitat;</li> <li>b. Pilbara olive python (<i>Liasis olivaceus barroni</i>) critical habitat;</li> <li>c. greater bilby (<i>Macrotis lagotis</i>) critical habitat;</li> <li>d. ghost bat (<i>Macroderma gigas</i>) critical habitat; and</li> <li>e. Pilbara leaf-nosed bat (<i>Rhinonicteris aurantia</i>) critical habitat.</li> </ul> <p>4) \$893 AUD (excluding GST) per hectare of the following values cleared as a result of the proposal:</p> <ul style="list-style-type: none"> <li>a. Northern quoll (<i>Dasyurus hallucatus</i>) supporting habitat;</li> <li>b. Pilbara olive python (<i>Liasis olivaceus barroni</i>) supporting habitat;</li> <li>c. ghost bat (<i>Macroderma gigas</i>) supporting habitat; and</li> <li>d. Pilbara leaf-nosed bat (<i>Rhinonicteris aurantia</i>).</li> </ul>
B7-4	The rates in condition B7-3 change annually each subsequent financial year in accordance with the percentage change in the CPI applicable to that financial year.
B7-5	<p>To achieve the objective in condition B7-1 the proponent must prepare an Impact Reconciliation Procedure, and submit to the CEO. This procedure must:</p> <ul style="list-style-type: none"> <li>1) spatially define the environmental value(s) identified in condition B7-1;</li> <li>2) spatially define the areas where offsets required by condition B7-1 are to be exempt;</li> <li>3) include a methodology to calculate the amount of clearing undertaken during each year of the biennial reporting period for each of the environmental values identified in condition B7-3;</li> <li>4) state that clearing calculation for the first biennial reporting period will commence from ground disturbing activities in accordance with condition B7-2 and end on the second 30 June following commencement of ground disturbing activities;</li> <li>5) state that clearing calculations for each subsequent biennial reporting period will commence on 1 July of the required reporting period, unless otherwise agreed by the CEO; and</li> <li>6) be prepared in accordance with Instructions on how to prepare Environmental Protection Act 1986 Part IV Impact Reconciliation Procedures and Impact Reconciliation Reports (or any subsequent revisions).</li> </ul>

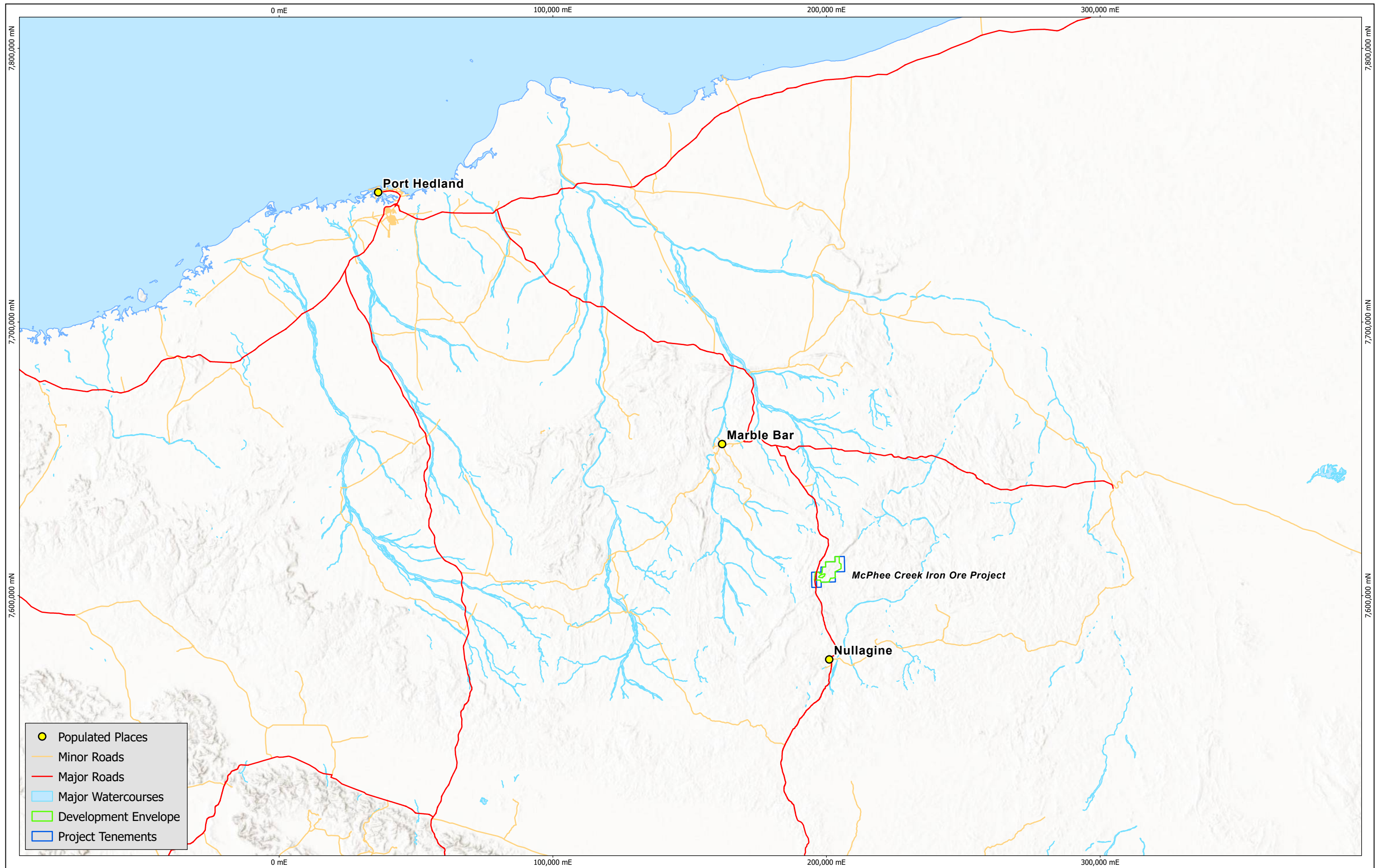
### 1.3 EPBC Condition Requirements

The approval conditions under the EPBC approval are expected to require offsets to be paid to the PEOF for impacts to:

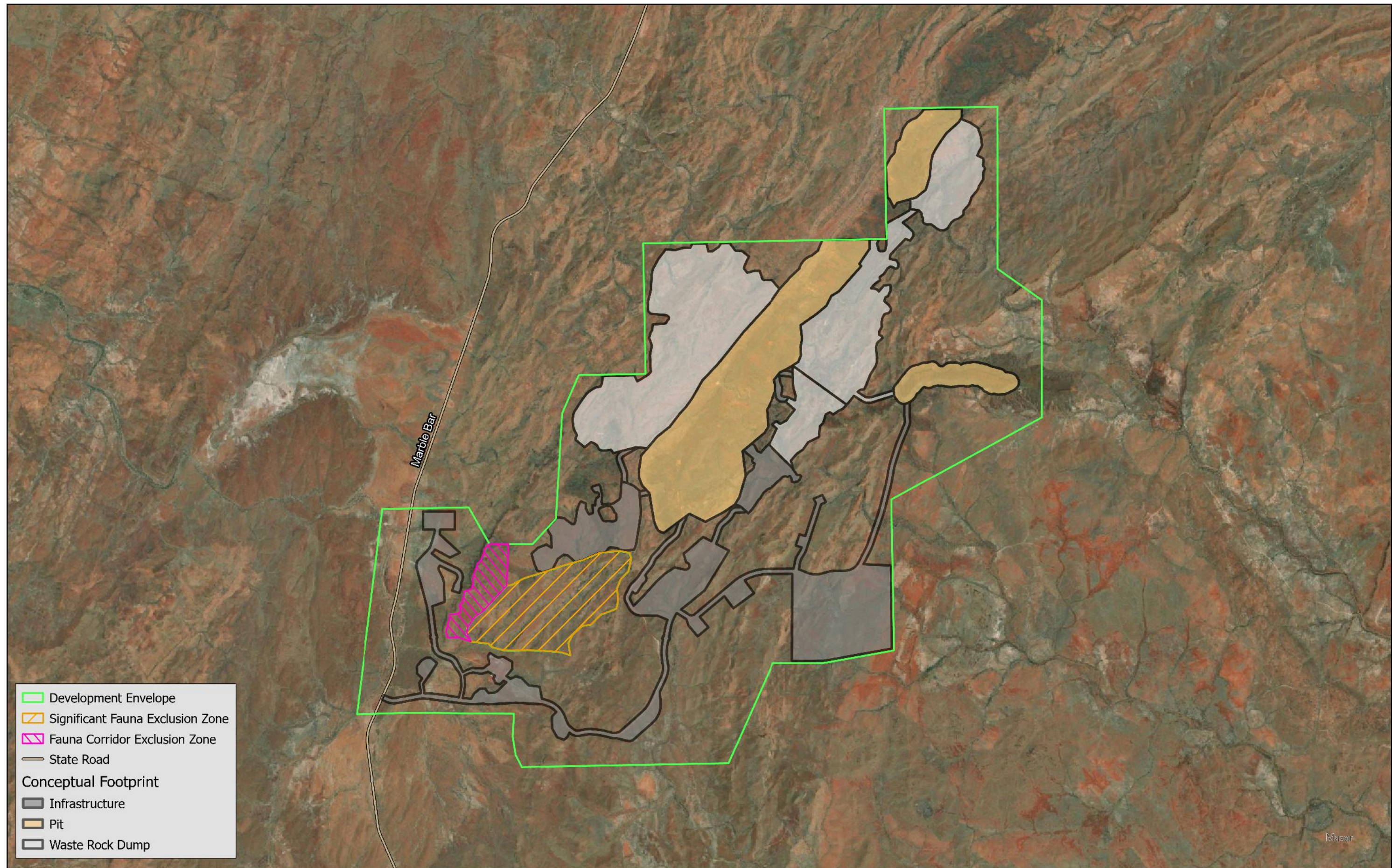
- Critical Habitat.
- Supporting habitat.

While this IRP has been developed based on the expected EPBC approval conditions, the IRP and subsequent IRRs will be implemented in accordance with the actual conditions received in the relevant approval document.









File Name: MCP-ENV-003 McPhee Impact Reconciliation Procedure.aprx  
 Date: 12/07/2024  
 Drawn: nehru.khandrika  
 Doc No: MCP-ENV-003-01-01 Impact Reconciliation Procedure Map 1

Projection: GDA 1994 MGA Zone 51

0 1 2 4  
 kilometres

Scale 1:50,000

Page size: A3



Development Envelope and Conceptual Footprint

Figure No:

1-2





## 2 Procedure

### 2.1 Identification of Biodiversity Values Requiring Offsets

The Proposal will involve a footprint of up to 1,913 hectares (ha) within a Development Envelope of 4,465 ha (Figure 1-2). The Proposal includes the following impacts which require offset:

- Critical habitat (as defined in Biologic 2021)
  - Northern quoll (*Dasyurus hallucatus*) - Breakaway/Cliff and Gorge/Gully habitat.
  - Pilbara olive python (*Liasis olivaceus barroni*) - Breakaway/Cliff, Drainage Line, Gorge/Gully and Hillcrest/Hillslope habitat.
  - Greater bilby (*Macrotis lagotis*) - Spinifex Sandplain habitat.
  - Ghost bat (*Macroderma gigas*) - Breakaway/Cliff and Gorge/Gully habitat.
  - Pilbara leaf-nosed bat (*Rhinioncteris aurantia*) - Breakaway/Cliff and Gorge/Gully habitat.
- Supporting Habitat (as defined in Biologic 2021)
  - Northern quoll (*Dasyurus hallucatus*)- Drainage Line and Hillcrest/Hillslope habitat.
  - Pilbara olive python (*Liasis olivaceus barroni*) - Rocky Foothills habitat.
  - Ghost bat (*Macroderma gigas*) - Drainage Line and Hillcrest/Hillslope habitat.
  - Pilbara leaf-nosed bat (*Rhinioncteris aurantia*) - Drainage Line, Hillcrest/Hillslope and Rocky Foothills habitat.
- Riparian Vegetation (as defined in Ecoscape 2020)
  - Vegetation types EcApyCci and EvApyCci
- 'Good' to 'excellent' condition native vegetation (as defined in Ecoscape 2020).

The offset rates per hectare for the Chichester IBRA subregion are provided in Table 2-1, as provided in Ministerial Statement condition B7-3 for the 2022-2023 financial year. In accordance with condition B7-4, these rates will change annually in accordance with the percentage change in the Consumer Price Index (CPI) applicable to that financial year.

The Proponent anticipates that the approval to be issued under the EPBC Act, will require contributions to the to the PEOF to counterbalance significant residual Impacts to:

- Critical habitat for the northern quoll, ghost bat, Pilbara leaf-nosed bat, Pilbara olive python and greater bilby.
- Supporting habitat for the northern quoll, ghost bat, Pilbara leaf-nosed bat, Pilbara olive python.

The EPBC offset rates per hectare are presented in Table 2-1 and were sourced from the approved *Sanjiv Ridge Project Stage 2* (EPBC 2021/8885). The actual rates to be applied will be confirmed in the EPBC approval conditions (approval pending). It is also expected that the EPBC approval will include a condition requiring an estimate of offset contributions per protected matter be provided, this has been included in Appendix A.

Where offset contributions to the PEOF are required under both the EP Act and EPBC Act (as shown in Table 2-1), the highest rate will apply. For example, critical habitat requires a payment of \$1,787 per hectare under the requirements of the EP Act and \$3,306 per hectare under the EPBC Act. A payment of \$3,306 per hectare will apply to critical habitat to satisfy both requirements.

The areas provided in Table 2-1 are based on the maximum disturbance areas, less any cleared areas defined as *Other Clearing* as per Table 2-2 and exempt from offset. Where environmental values are overlapping, payment will be made in accordance with the highest applicable rate (e.g.



## Impact Reconciliation Procedure

### McPhee Creek Iron Ore Project

where Critical Habitat and Riparian Vegetation overlap, payment will be made in accordance with the Critical Habitat rate for this area). This has been reflected in the area calculations in Table 2-1.

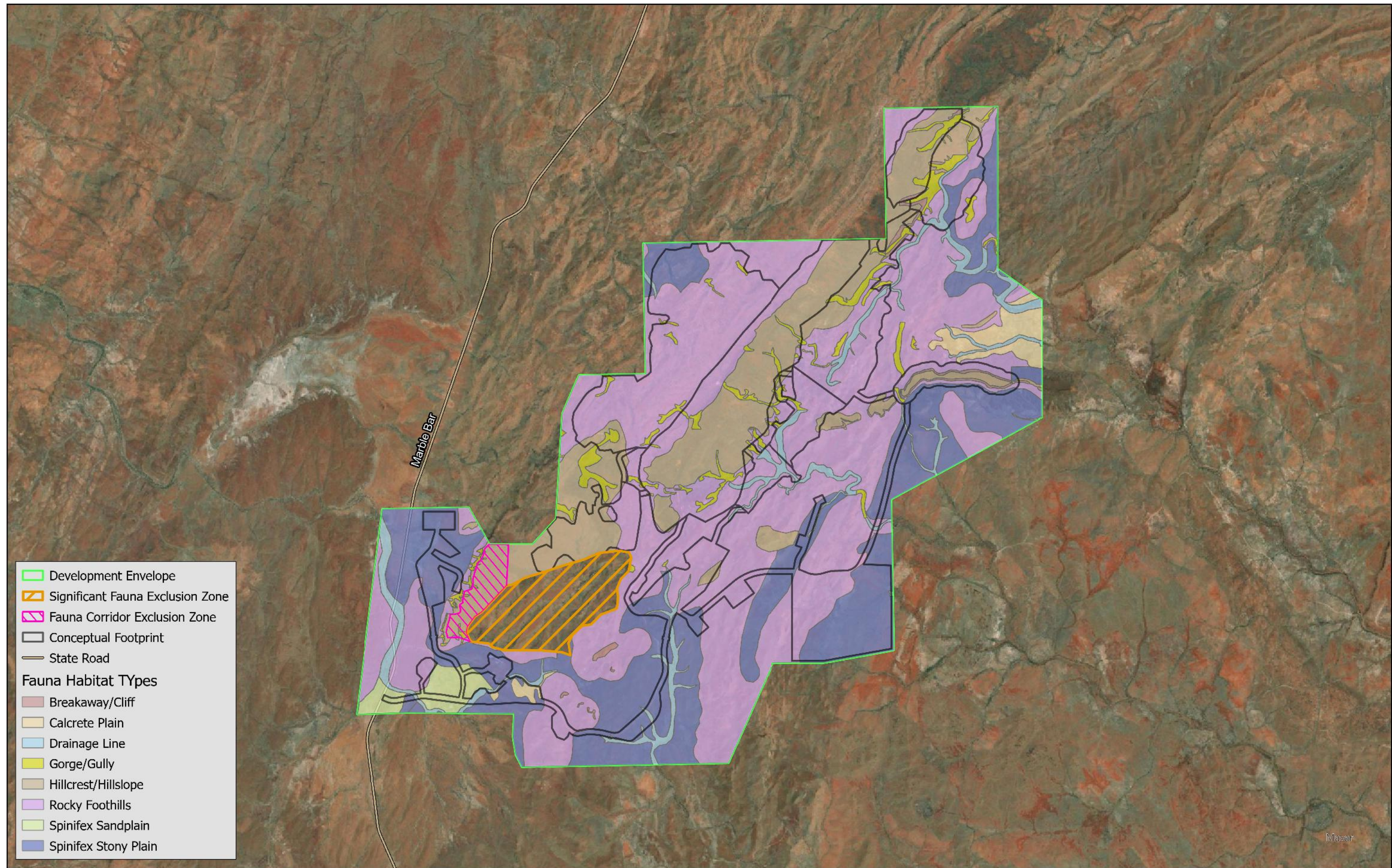
Habitat types and vegetation condition within the Development Envelope are presented in Figure 2-1 and Figure 2-2 respectively. Environmental Values requiring offset are shown in Figure 2-3.

Table 2-1: Environmental Values to be Offset

Mapping unit	Potential Area to be Offset (ha) <sup>1</sup>	EP Act		EPBC Act		Applicable Offset Rate (\$/ha) <sup>4</sup>
		Environmental Value requiring Offset	Offset Rate (\$/ha) <sup>2</sup>	Environmental Value requiring Offset	Offset Rate (\$/ha) <sup>3</sup>	
Breakaway/Cliff	587.5	Critical Habitat	\$1,787	Critical Habitat	\$3,306	\$3,306
Drainage Line						
Gorge/Gully						
Hillcrest/Hillslope						
Spinifex Sandplain						
Riparian Vegetation (EcApyCci & EvApyCci)	19.0	Riparian Vegetation (including GDV)	\$1,787	N/A	N/A	\$1,787
Rocky Foothills	873.7	Supporting habitat	\$893	Supporting Habitat	\$1,653	\$1,653
Calcrete Plain, Spinifex Stoney Plain	301.5	Native vegetation in good to excellent condition	\$893	N/A	N/A	\$893
Cleared Areas <sup>5</sup>	131.1	N/A	N/A	N/A	N/A	N/A

1. Area based on the mapped extent within the Conceptual Footprint, less any cleared areas defined as *Other Clearing* as per Table 2-2 and exempt from offset. Calculations may include rounding errors.
2. Rates are in accordance with Ministerial Statement Condition B7-3 and are to be indexed annually. Rates are shown in Australian dollars and do not include GST.
3. EPBC rates are based on the Sanjiv Ridge Project Stage 2 approval (EPBC 2021/8885). Rates are shown in Australian dollars, are to be indexed annually and do not include GST. The actual rates to be used will be confirmed in the EPBC approval conditions (approval pending).
4. Rates to be indexed annually according to the indexation rules for the applicable offset rate.
5. Cleared areas presented are those within the Conceptual Footprint. An additional 16.1 ha of clearing exists outside the Conceptual Footprint (within the Development Envelope) as discussed in Section 2.2.2. These areas are considered *Other Clearing* under Table 2-2 and exempt from offset.





File Name: MCP-ENV-003 McPhee Impact Reconciliation Procedure.aprx  
 Date: 12/07/2024  
 Drawn: nehru.khandrika  
 Doc No: MCP-ENV-003-02-01 Impact Reconciliation Procedure Map 2

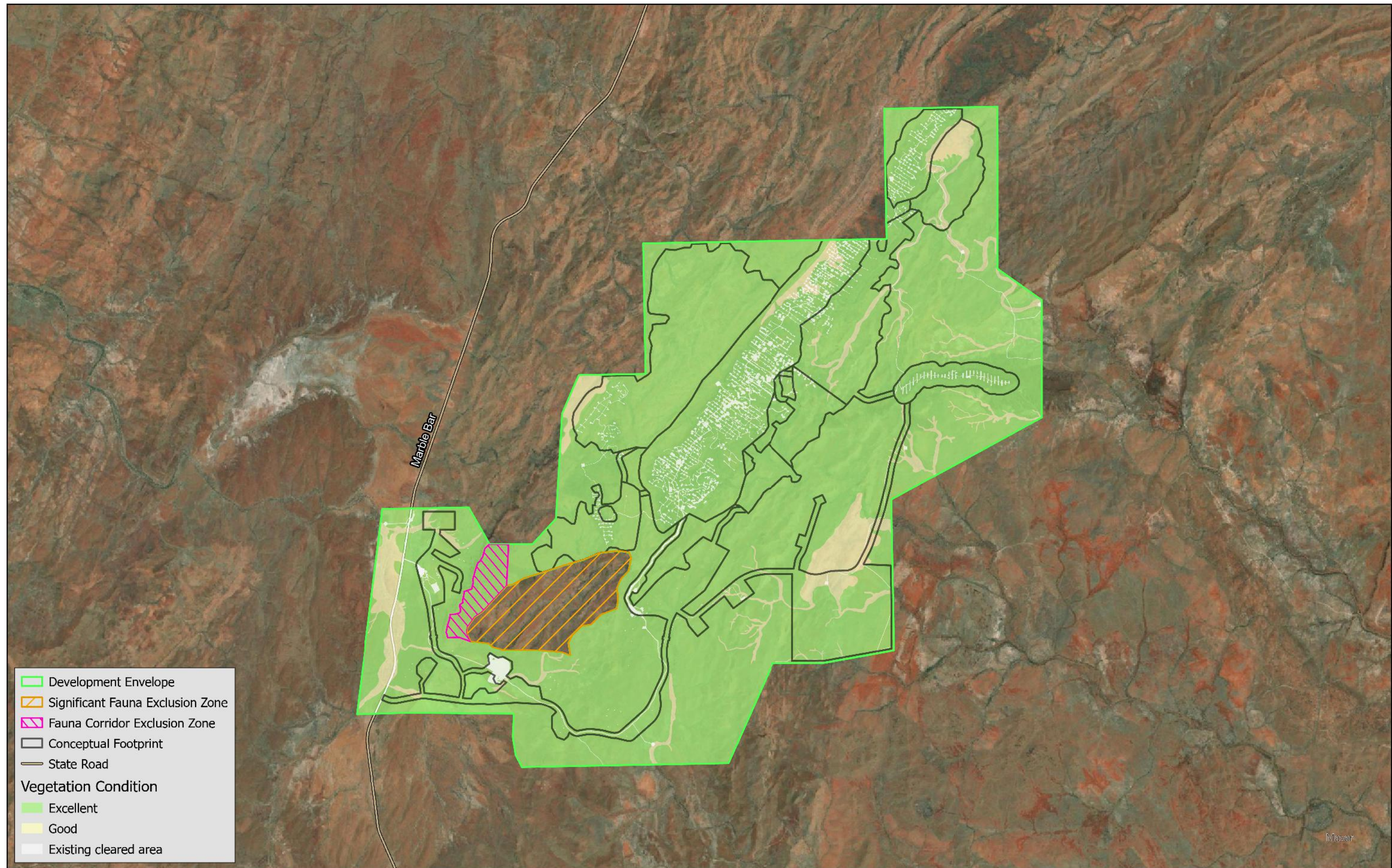
Projection: GDA 1994 MGA Zone 51  
 0 1 2 4  
 kilometres  
 Scale 1:50,000  
 Page size: A3



Habitat Types within the Development Envelope

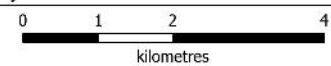
Figure No:  
 2-1





File Name: MCP-ENV-003 McPhee Impact Reconciliation Procedure.aprx  
 Date: 12/07/2024  
 Drawn: nehru.khandrika  
 Doc No: MCP-ENV-003-03-01 Impact Reconciliation Procedure Map 3

Projection: GDA 1994 MGA Zone 51



Scale 1:50,000

Page size: A3

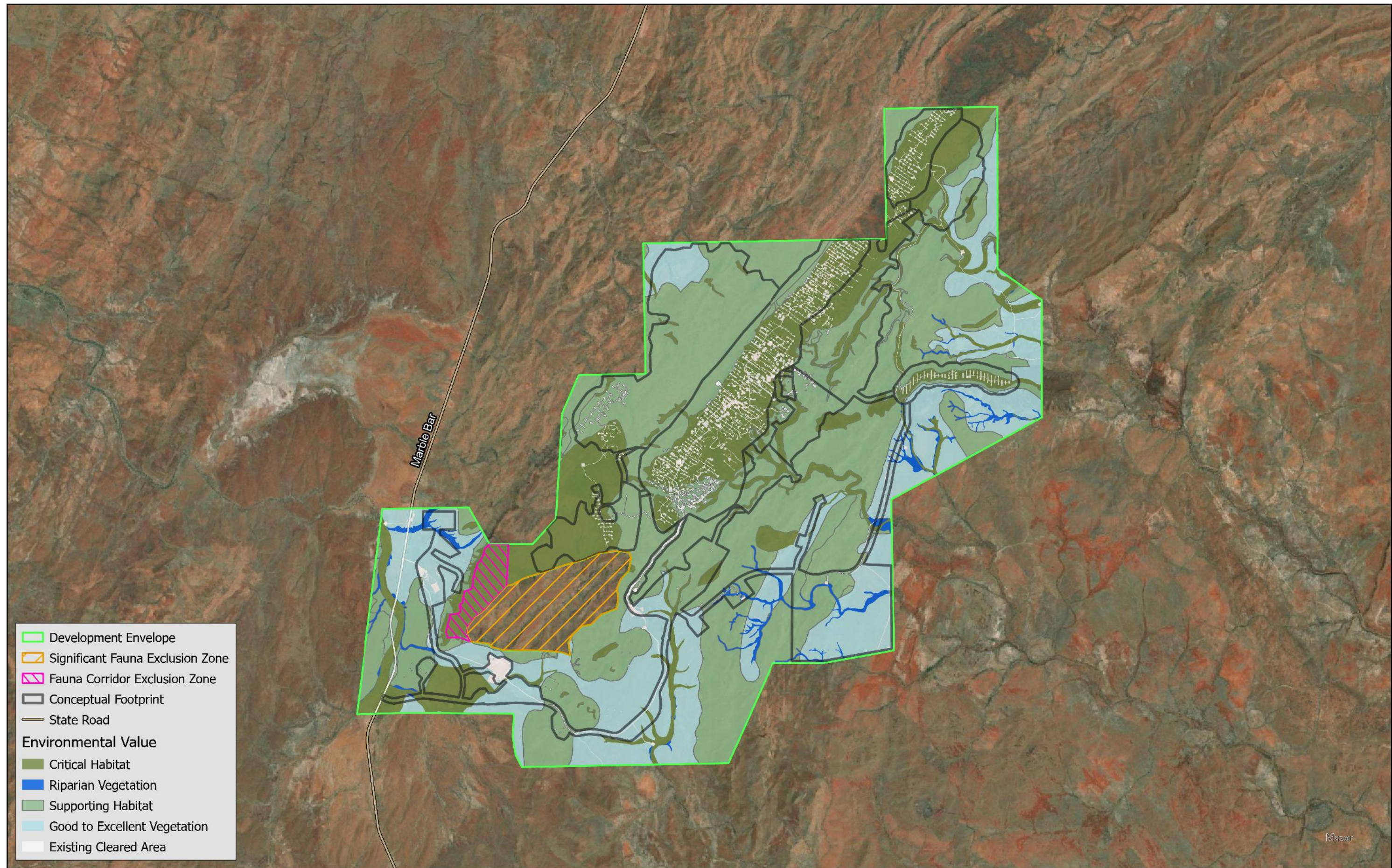


Vegetation Condition

Figure No:

2-2





- Development Envelope
- ▨ Significant Fauna Exclusion Zone
- ▨ Fauna Corridor Exclusion Zone
- Conceptual Footprint
- State Road
- Environmental Value**
- Critical Habitat
- Riparian Vegetation
- Supporting Habitat
- Good to Excellent Vegetation
- Existing Cleared Area



File Name: MCP-ENV-003 McPhee Impact Reconciliation Procedure.aprx  
 Date: 12/07/2024  
 Drawn: nehru.khandrika  
 Doc No: MCP-ENV-003-04-01 Impact Reconciliation Procedure Map 4

Projection: GDA 1994 MGA Zone 51  
 0 1 2 4  
 kilometres  
 Scale 1:50,000  
 Page size: A3



Environmental Values Requiring Offset

Figure No:  
**2-3**





## 2.2 Methods to Determine Impacts

Atlas has well established processes for documenting and recording ground disturbances. The processes relevant to the IRP and subsequent Impact Reconciliation Reports (IRRs) are summarised below.

### 2.2.1 Ground Disturbance Permits

The Proponent's Ground Disturbance Permit (GDP) Procedure (950-HSE-EN-PRO-0006) will apply to all ground disturbance undertaken for the Proposal. The GDP Procedure does not itself form part of this IRP, however the following is an outline of how it operates:

1. The need for ground disturbance (including the clearing of native vegetation) is identified.
2. A GDP application is made, identifying the activities to be undertaken, including the boundary of the area required to be cleared.
3. The GDP application is assessed to ensure it complies with relevant approval boundaries, limits and conditions.
4. A GDP is approved and issued to a GDP owner, a person designated as responsible for the clearing.
5. When clearing is finished, the GDP owner arranges for the actual extent of ground disturbance and clearing to be mapped via an on-ground survey.
6. The completed GDP and on-ground survey is returned to the GDP team.
7. The master ground disturbance layer in the Proponent's Geographic Information System (GIS) is updated to capture clearing undertaken, including details such as the clearing date, purpose and relevant approval instruments.

The purpose of the on-ground survey mentioned in step 5 is to accurately determine and map the edge of areas that have been cleared. The resulting product is spatial data polygons representing cleared areas. While this is the primary and most common method Atlas uses to determine clearing extents, Atlas also acquires high resolution aerial imagery of active project sites from time to time. Imagery is used as part of suite of mapping tools to accurately capture on-ground conditions including ground disturbance. It is used to help verify the extent of ground disturbance as mapped and reported by surveyors. The extent of recent ground disturbance can also be determined from recent aerial imagery where survey pick-up has not yet been completed. Once survey pick-up is complete, the master ground disturbance layer is amended accordingly.

### 2.2.2 Determining the Extent of Clearing

The extent of clearing to be reported in the Impact Reconciliation Report (IRR) will be determined using spatial analysis. Given that each successive IRR relates to a specific reporting period and there may be other clearing within the Development Envelope (i.e. not part of this Proposal), new clearing can be determined using the following approach (terms are defined in Table 2-2):

$$\text{New Clearing} = \text{Total Clearing} - \text{Previously Reported Clearing} - \text{Other Clearing}$$



## Impact Reconciliation Procedure

### McPhee Creek Iron Ore Project



Table 2-2: Definitions of clearing terms

Term	Definition
New Clearing	Extent of clearing to be reported in the IRR.
Total Clearing	Extent of the master ground disturbance layer within the Development Envelope, as at the end of the reporting period, based on survey pick-up and GIS mapping.
Previously Reported Clearing	Total extent of clearing reported in all IRRs previously submitted. If no IRRs have been submitted, this value is zero.
Other Clearing	<p>Extent of clearing that is not part of this Proposal, i.e. clearing that is not attributable to the Proposal. Examples include:</p> <ul style="list-style-type: none"><li>• Clearing undertaken inside the Development Envelope by others, e.g. pastoralist activities</li><li>• Other clearing undertaken by Atlas in a lawful manner, e.g. clearing exempted by the Environmental Protection (Clearing of Native Vegetation) Regulations 2004 such as for exploration work.</li></ul> <p>Future amendments to Other Clearing, i.e. to account for new areas of Other Clearing, will be accounted for in IRRs.</p>

The current extent of *Other Clearing* within the Development Envelope totals 147.2 ha, consisting of 131.1 ha within the Conceptual Footprint and 16.1 ha outside the Conceptual Footprint.



# Impact Reconciliation Procedure

## McPhee Creek Iron Ore Project

### 3 Reporting

The Proponent will prepare one or more IRRs to document the clearing undertaken. The IRR(s) will be provided to DWER to enable DWER to determine the contributions payable.

#### 3.1 Frequency and Timing

Clearing will be calculated for each annual **reconciliation period**. The first reconciliation period starts on the day ground disturbing activities commence under the Ministerial Statement and ends on the next 30 June. Each successive reconciliation period starts on 1 July and ends on the next 30 June.

Clearing will be reported in IRRs biennially; i.e. each IRR covers a two-year **reporting period** spanning two reconciliation periods. The first reporting period starts on the day ground disturbing activities commence and ends on the second 30 June following. Each successive reporting period starts on 1 July and ends on the second 30 June following. The IRR will tabulate clearing data for each reconciliation period.

Table 3-1 outlines the timeframes and frequency of impact reconciliation activities under this IRP.

Table 3-1: Impact Reconciliation Reporting Periods

Reporting Period <sup>1</sup>	Action	Timing <sup>2</sup>
-	Ministerial Statement issued	Q2 2024
-	Clearing commences	Q3 2024
<b>Period 1</b>	<b>Clearing undertaken during period</b>	<b>Date of first ground disturbing activities – 30 June 2026</b>
	Survey pick-up	August 2026
	IRR submitted to DWER	31 October 2026
	Payment to the PEOF	Within 6 weeks of invoice from DWER confirming amount to be paid <sup>3</sup>
<b>Period 2</b>	<b>Clearing undertaken during period</b>	<b>1 July 2026 – 30 June 2028</b>
	Survey pick-up	August 2028
	IRR submitted to DWER	31 October 2028
	Payment to the PEOF	Within 6 weeks of invoice from DWER confirming amount to be paid <sup>3</sup>
<b>Period 3</b>	<b>Clearing undertaken during period</b>	<b>1 July 2028 – 30 June 2030</b>
	Survey pick-up	August 2030
	IRR submitted to DWER	31 October 2030
	Payment to the PEOF	Within 6 weeks of invoice from DWER confirming amount to be paid <sup>3</sup>
<b>Period 4</b>	<b>Clearing undertaken during period</b>	<b>1 July 2030 – 30 June 2032</b>
	Survey pick-up	August 2032
	IRR submitted to DWER	31 October 2032



## Impact Reconciliation Procedure

### McPhee Creek Iron Ore Project



Reporting Period <sup>1</sup>	Action	Timing <sup>2</sup>
	Payment to the PEOF	Within 6 weeks of invoice from DWER confirming amount to be paid <sup>3</sup>
<b>Period 5</b>	<b>Clearing undertaken during period</b>	<b>1 July 2032 – 30 June 2034</b>
	Survey pick-up	August 2034
	IRR submitted to DWER	31 October 2034
	Payment to the PEOF	Within 6 weeks of invoice from DWER confirming amount to be paid <sup>3</sup>
<b>Period 6</b>	<b>Clearing undertaken during period</b>	<b>1 July 2034 – 30 June 2036</b>
	Survey pick-up	August 2036
	IRR submitted to DWER	31 October 2036
	Payment to the PEOF	Within 6 weeks of invoice from DWER confirming amount to be paid <sup>3</sup>
<b>Period 7</b>	<b>Clearing undertaken during period</b>	<b>1 July 2036 – 30 June 2038</b>
	Survey pick-up	August 2038
	IRR submitted to DWER	31 October 2038
	Payment to the PEOF	Within 6 weeks of invoice from DWER confirming amount to be paid <sup>3</sup>
<b>Period 8</b>	<b>Clearing undertaken during period</b>	<b>1 July 2038 – 30 June 2040</b>
	Survey pick-up	August 2040
	IRR submitted to DWER	31 October 2040
	Payment to the PEOF	Within 6 weeks of invoice from DWER confirming amount to be paid <sup>3</sup>

1. Additional reporting periods will be added until all approved clearing has occurred, or until DWER advises in writing that Atlas is no longer required to implement this IRP.
2. Timing is Indicative and assumes clearing commences on or before 30 June 2026.
3. After the IRR is submitted, DWER has final responsibility for determining and confirming the amount to be paid. Atlas cannot make payment until DWER has issued an invoice confirming the amount to be paid.

Reporting Period 1 may be less than two years to align with a financial year reporting period. No clearing is expected after the end of the last reporting period, as identified in Table 3-1. If all approved clearing has not been completed by the end of the last reporting period, additional reporting periods will be added according to the reporting frequency established by Table 3-1. Reporting periods will continue until DWER advises in writing that Atlas is no longer required to implement this IRP.

## 3.2 Impacts and Reconciliation

As per Section 2.1 and Table 2-1, the total areas for each of the offset values based on the Conceptual Footprint are:

- 587.5 ha of critical habitat.
- 19.0 ha of riparian vegetation.
- 873.7 ha of supporting habitat.
- 301.5 ha of native vegetation in good to excellent condition.



## Impact Reconciliation Procedure

### McPhee Creek Iron Ore Project

Each IRR will include the following information:

- Impacts that have occurred during each reconciliation period of the reporting period, attributed by environmental value and offset rate.
- Summary of information used to validate impact areas, including as applicable, aerial imagery, digitised polygons and ground-truthing surveys used to determine impacts for each reconciliation period.
- Information regarding any exemptions, other clearing approvals or reductions to contributions to the fund, where relevant (such information may include details and spatial data for impacts approved against a previous Ministerial Statement, or clearing permit).
- Details and spatial data for historical impacts that are excluded from offset contributions.
- An estimate of impacts expected to be reported in subsequent reporting periods.
- A spatial data package representing the impacts that have occurred during the reporting period.

The IRR and accompanying spatial data will be prepared in accordance with the 'Instructions on how to prepare *Environmental Protection Act 1986* Part IV Impact Reconciliation Procedures and Impact Reconciliation Reports' (EPA 2021) or equivalent guidance published by the EPA applicable at the time of preparing the IRR. The instructions contain minimum information requirements for the IRR and set out standards on spatial data content, structure and format.



## 4 References

Biologic Environmental Survey Pty Ltd (Biologic) 2021. *McPhee Creek Consolidated Terrestrial Fauna Report*. Report prepared for Roy Hill and Atlas Iron Limited.

Ecoscape (Australia) Pty Ltd (Ecoscape) 2020. *McPhee Creek Flora and Vegetation Survey*, report prepared for Atlas Iron.

Environmental Protection Authority (EPA). 2021. Instructions on how to prepare *Environmental Protection Act 1986* Part IV Impact Reconciliation Procedures and Impact Reconciliation Reports. Environmental Protection Authority, Joondalup, WA.

Department of Water and Environmental Regulation (DWER). 2021. The Pilbara Environmental Offsets Fund. Retrieved 1 October 2021, from <https://www.dwer.wa.gov.au/peof>. Department of Water and Environmental Regulation, Joondalup, WA.





### Appendix A. Estimate of Contributions to the PEOF

It is expected that the EPBC approval will include a condition that requires this IRP to include the estimated financial contributions that will be paid into the Pilbara Environmental Offsets Fund per hectare of habitat, for each protected matter that is impacted.

Table A1 shows the estimated financial contributions to the PEOF based on the expected EPBC approval conditions.

Table A-1: Estimate of Contributions to the PEOF under the EPBC Act

EPBC Act Protected Matter to be Offset	Potential Area to be Offset (ha)	Protected Matter Value Rating Category	Environmental Value Justification	IBRA <sup>1</sup> Region and Subregion	Offset Rate (per ha) <sup>2</sup>	Total to be Offset <sup>2</sup>
Northern quoll, ghost bat, Pilbara leaf-nosed bat, Pilbara olive python, greater bilby	587.5	Critical habitat	Impacts to critical habitat for northern quoll, ghost bat, Pilbara leaf-nosed bat, Pilbara olive python and/or greater bilby within the Development Envelope	Pilbara, Chichester	\$3,306	\$1,942,275
Northern quoll, ghost bat, Pilbara leaf-nosed bat, Pilbara olive python	873.7	Supporting habitat	Impacts to supporting habitat for northern quoll, ghost bat, Pilbara leaf-nosed bat, Pilbara olive python within the Development Envelope	Pilbara, Chichester	\$1,653	\$1,444,226
Cleared areas <sup>3</sup>	131.1	N/A	Defined as <i>Other Clearing</i> as per Table 2-2 and exempt from offset	Pilbara, Chichester	N/A	\$0
<b>Estimated Total Amount to be Offset</b>						<b>\$3,386,501</b>
<b>Maximum Total Amount Payable to PEOF (Commonwealth requirement)</b>						<b>\$3,386,501</b>
Initial Contribution <sup>4</sup> (10% of Estimated Total)						\$338,650

1. Interim Biogeographic Regionalisation for Australia.

2. Rates are based on those identified in the Sanjiv Ridge Project Stage 2 approval (EPBC 2021/8885), are calculated on the **2021-2022** financial year and are to be indexed annually. Rates are shown in Australian dollars and do not include GST.

3. Cleared areas for the purpose of this table only includes clearing with the areas identified as critical and supporting habitats for the EPBC Act offsets, as defined in Table 2-1.

4. It is expected that the EPBC approval will include a condition that requires an initial contribution of at least 10% of the estimated total to be paid prior to commencement of the action.